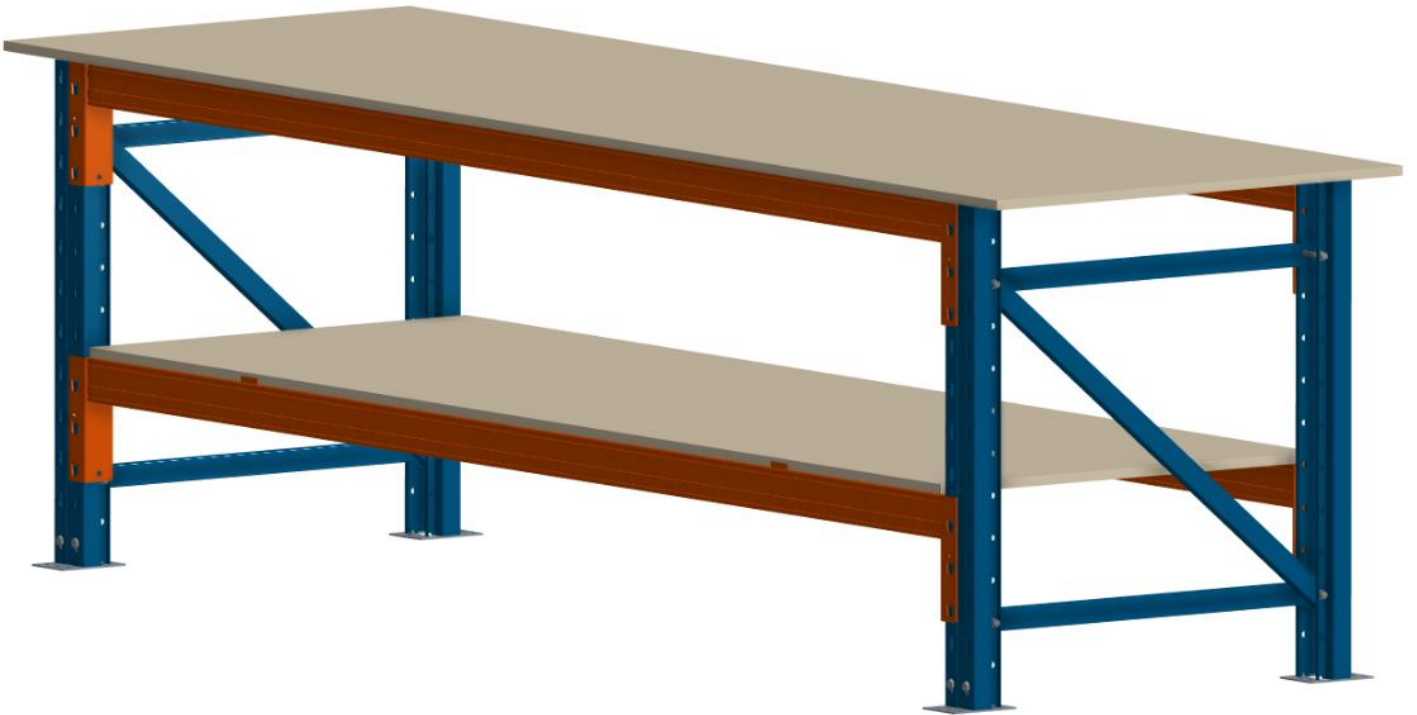
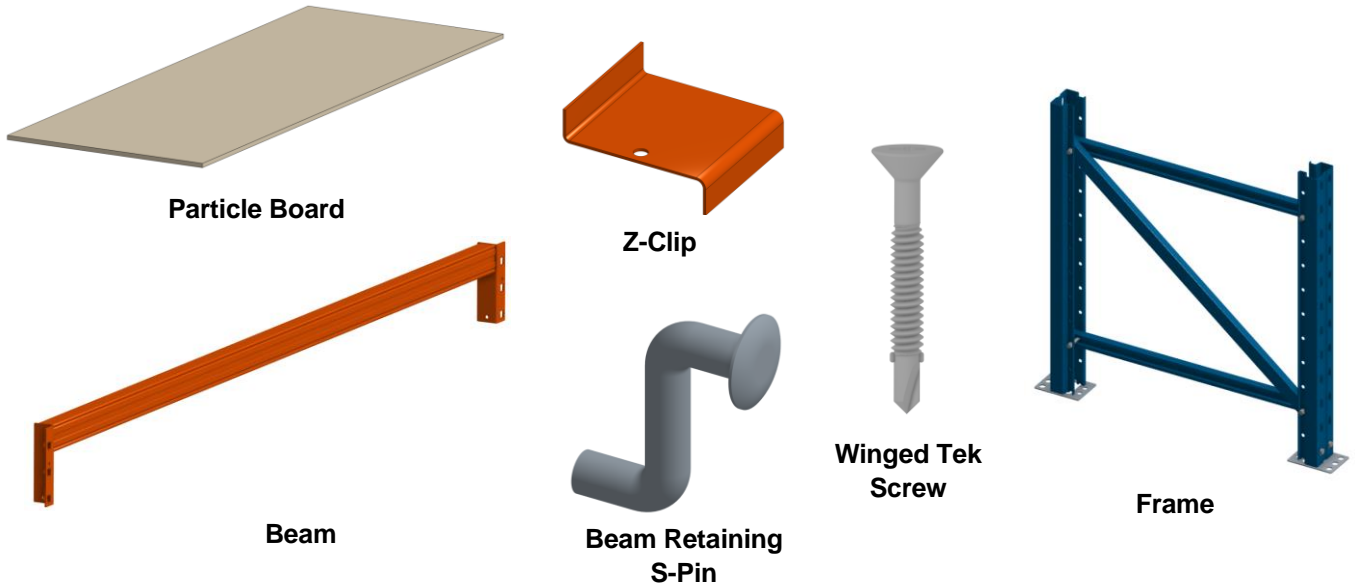


Heavy Duty Workbench Assembly Guide





Heavy Duty Workbench Components



Beam Connection

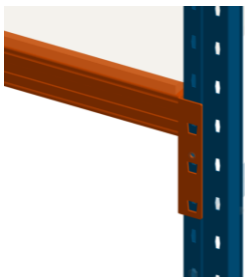


Figure 1

The beams connect to the face of the frames as shown in Figure 1. The top level of beams will need to be positioned at the top of the frame to allow for the benchtop to overhang.

Beam Retaining Pin Z Clip Location

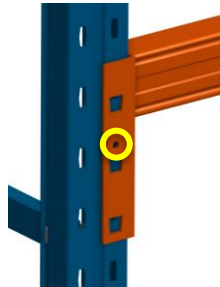


Figure 2

The Beam Retaining Pins insert into the holes on the face of the beam connector as circled in Figure 2.

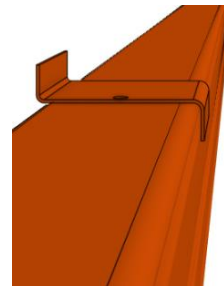


Figure 3

The Z Clips sit on top of the Beams on the undershelf Level as shown in Figure 3. Use two (2) Z-Clips per beam (Four (4) per level). These are used to hold the particle board in place.

Particle Board - Undershelf

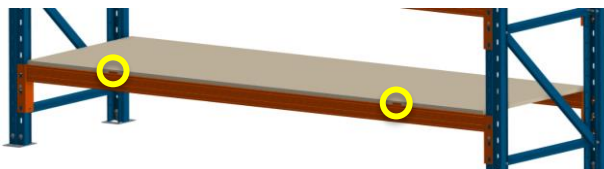


Figure 4

The Particle Board for the Undershelf fits between the confines of the Z-Clips placed on top of the beams. The Z-Clips are circled in Figure 4.

Particle Board - Benchtop



Figure 5

The Particle Board for the Benchtop sits on the top level of beams. This is fixed down by using the Winged Tek Screws through the particle board into the top of the beams.